

# Technical data

## Engine

Manufacturer	Deutz
Type	4-cylinder, turbocharged diesel engine
Combustion	4-stroke, direct injection
Displacement	3200 cm <sup>3</sup>
Power rating acc. to ISO 9249 (DIN 70020) at 2000 rpm	53 kW (72 HP)
Cooling system	Water

## Electrical system

Operating voltage	12 V
Battery	12 V / 105 Ah / 450 A

## Power transmission

Hydrostatic drive with automatic adjustment of drawbar pull and speed. 4-wheel drive from reduction gear on front axle via cardan shaft to rear axle. Infinitely variable speed control forward and reverse in 2 speed ranges:

Working speed	0-6 km/h
Travel speed	0-20 km/h

## Axles

Front axle: oscillating planetary drive axle.

Oscillating angle 11.5 deg.

Rear axle: rigid planetary drive axle.

## Tires

8.25-20 12 PR as standard

## Brakes

Service brake: hydraulic dual-circuit pump accumulator brake, acting on oil-immersed multi-disc brakes of front and rear axles.

Excavator brake: acting on front and rear axles through lockable service brake.

Auxiliary brake: Hydrostatic drive provides dynamic braking.

Parking brake: Hydraulic spring-loaded brake, electrically controlled.

## Steering

Fully hydraulically controlled front axle with integrated steering cylinder.

Max. steering angle 32 deg.

## Swing system

Hydrostatic drive with 2-stage planetary gear and axial piston motor, also provides dynamic braking. Additionally, an automatically controlled spring-loaded multi-disc brake acting as parking brake.

Swing speed 0-10 rpm.

## Hydraulic system

Travel hydraulics: Closed circuit, independent from working hydraulics.

Max. pump capacity 112 l/min at 420 bar

Working hydraulics: Axial piston pump with load-sensing, coupled with a load-independent flow division (LUDV). Simultaneous, independent control of all actions. Sensitive actions irrespective of loads.

Max. pump capacity	142 l/min
Max. working pressure	280 bar
Triple gear pump for all positioning functions and swing movements.	
Pump capacity	33 + 19 + 13 l/min @ 230 bar
Control circuit for work attachments:	
Max. working pressure	280 bar
Pump capacity, adjustable	20 - 100 l/min

## Operating data (with standard attachments)

Operating weight according to ISO 6016	
with monobloc boom	8400 kg
with two-piece articulated boom "TPA"	8600 kg
with Circular boom	8800 kg
with single tires	- 440 kg
with blade support	+ 100 kg
Overall length in travel position, monobl. boom	5380 mm
Overall length in travel position, "TPA"	5400 mm
Overall length in travel position, Circular boom	5450 mm
Overall height	3950 mm
Overall length in transp. position, monobl. boom	6520 mm
Overall length in transport position, "TPA"	6120 mm
Overall length in transp. position, Circular boom	6680 mm
Total width (twin tires)	2450 mm
Tread width	1942 mm
Wheel base	2240 mm
Ground clearance below cardan shaft	400 mm
Turning radius	approx. 6700 mm
Uppercarriage tailswing	1500 mm
Breakout force acc. to DIN 24086	53,200 N
Ripping force in compliance with DIN 24086	42,600 N
Ripping force in compliance with DIN 24086 (Circular boom)	42,000 N

## Knickmatik®

Lateral parallel adjustment at total digging depth.

Angle of artic./Lateral adjustm. to the left 53° / 870 mm

Angle of artic./Lateral adjustm. to the right 67° / 990 mm

## Cab

Sound-insulated, rubber-mounted full-vision steel cab, completely tiltable to the front. Safety glass windows, skylight, front window supported by pneumatic springs. Cab heating with windshield defroster via hot water heat exchanger with 3-setting fan. Fresh air / recirculating air system, fresh air filter.

Hydraulically cushioned comfort seat with armrests and longitudinal, height and tilt adjustments. Operator control levers adjustable in longitudinal position. Instrument panel with safety module. Working floodlights Halogen E-3.

Noise emission ambient  $L_{WA}$  97 dB (A)

Noise emission cab  $L_{pA}$  74 dB (A)

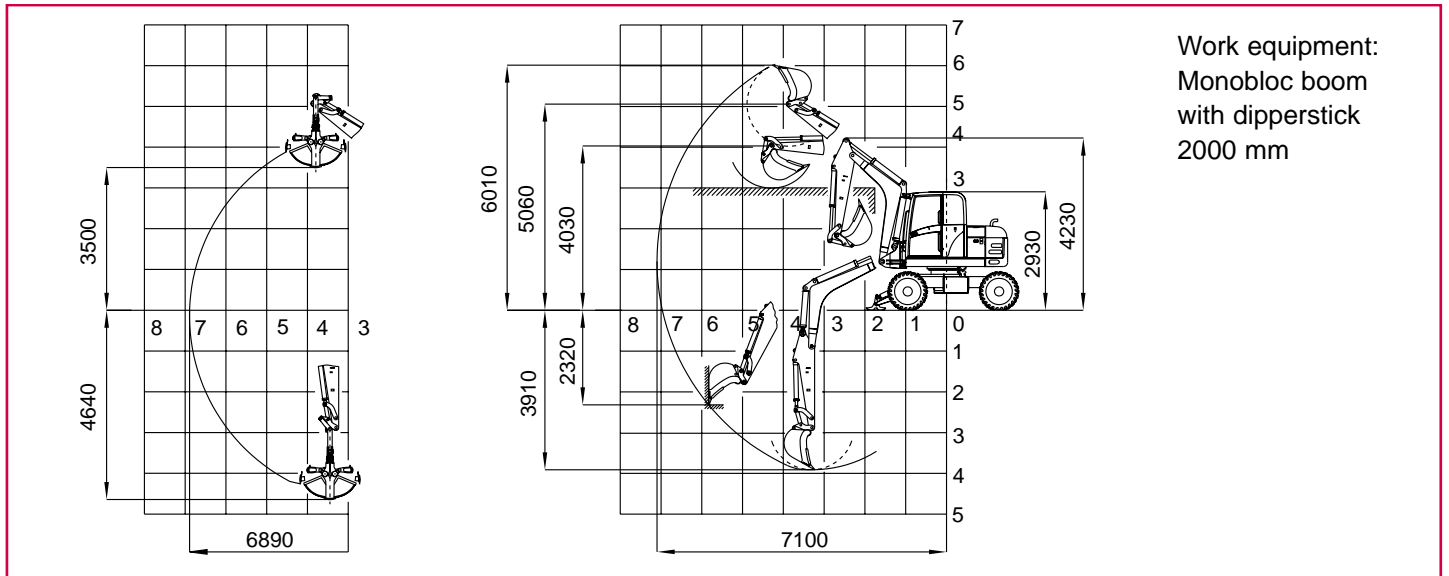
Determined according to EEC-directive 86/662.

## Fluid capacities

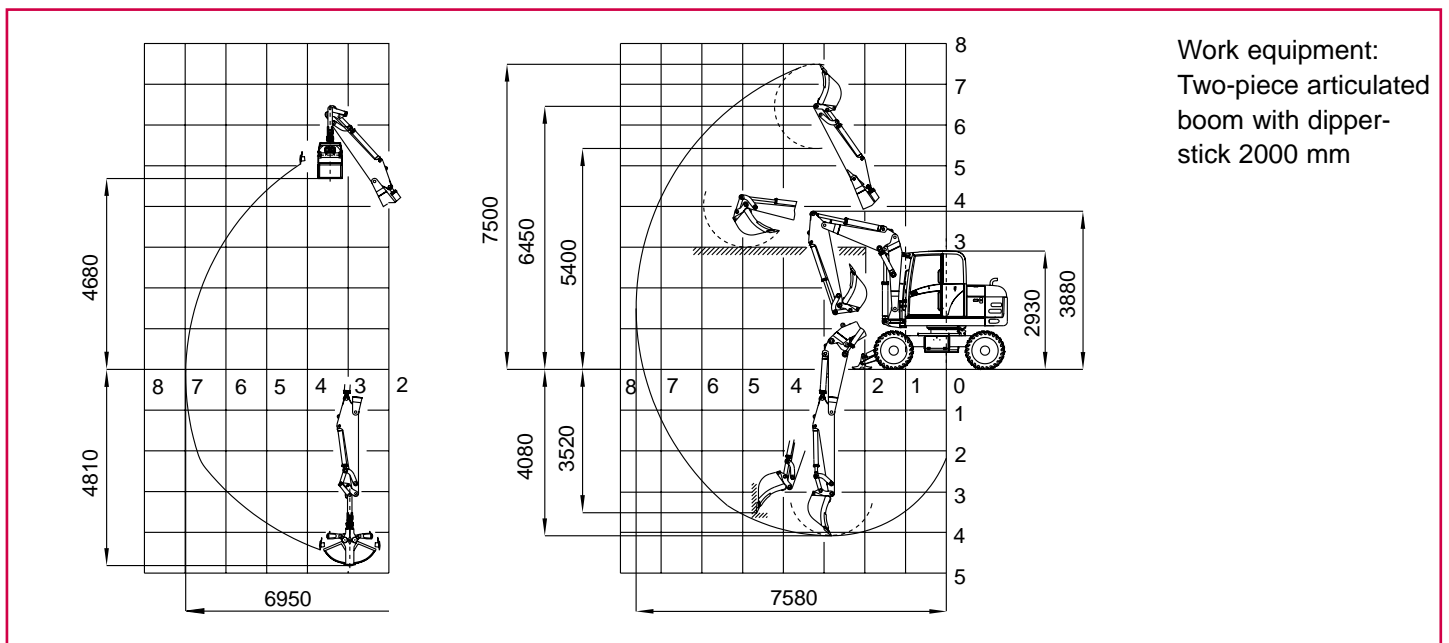
Diesel tank capacity	approx. 190 l
Hydraulic system (incl. tank)	approx. 190 l

# Digging envelopes

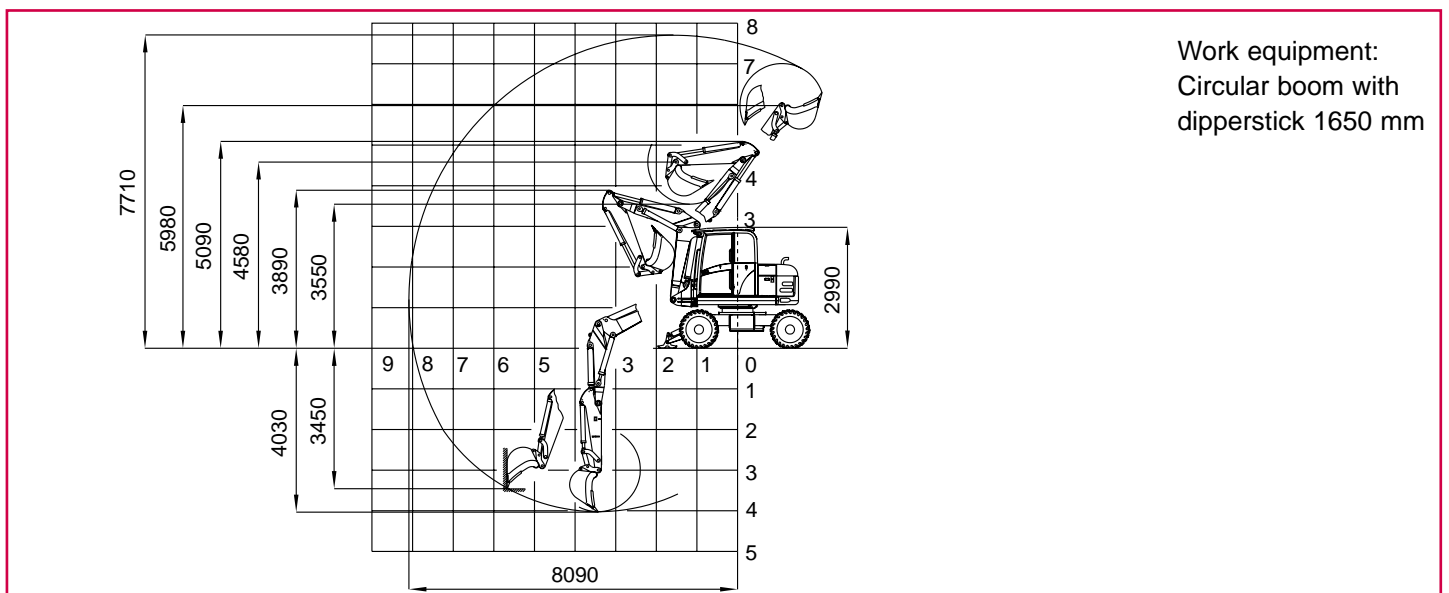
## HML 32 Monobloc boom (All dimensions refer to tires 8.25-20)



## HML 32 Two-piece articulated boom "TPA"

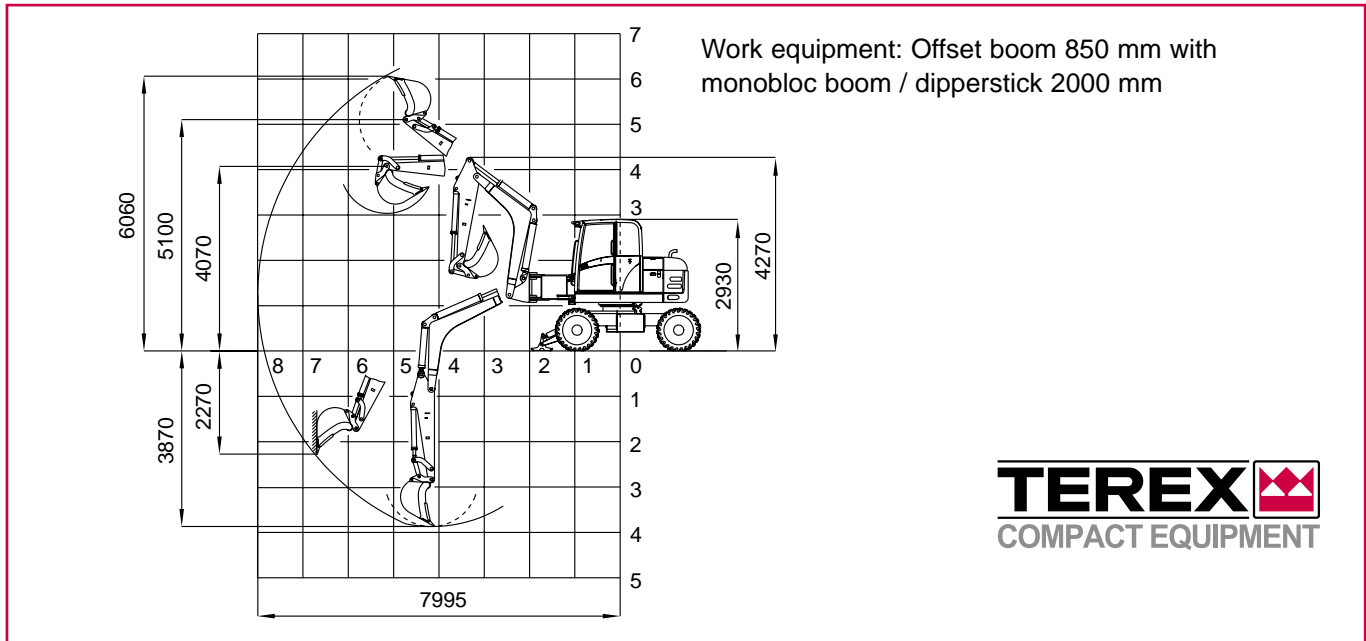


## HML 32 Circular boom



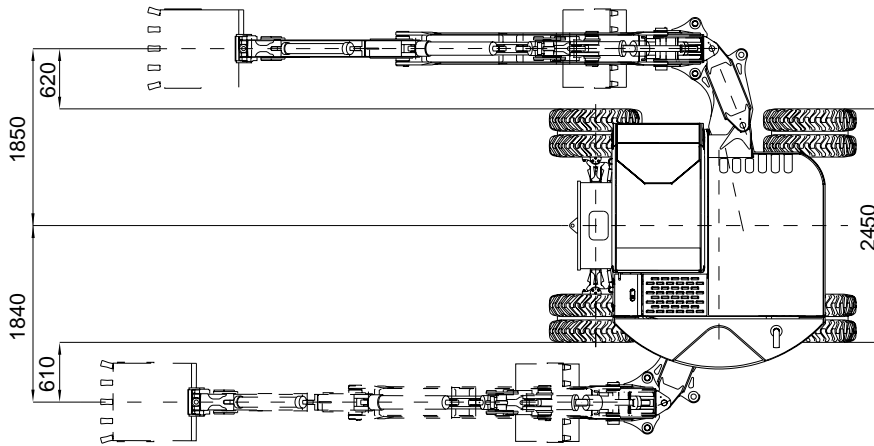
# Digging envelopes

## HML 32 Offset boom

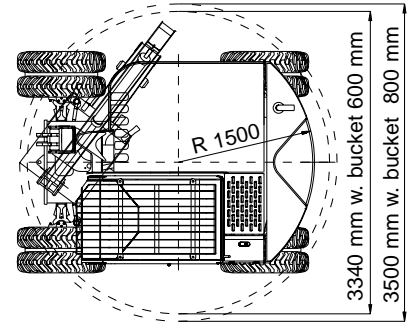


## Dimensions

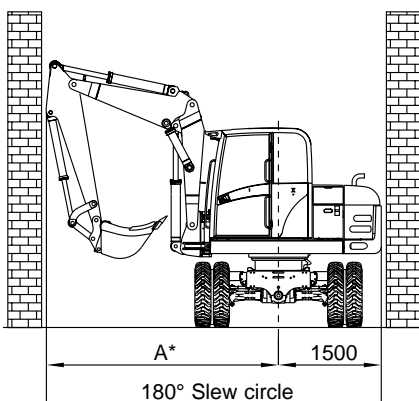
### HML 32 Offset boom / Top view



### HML 32 Circular - Slew circle



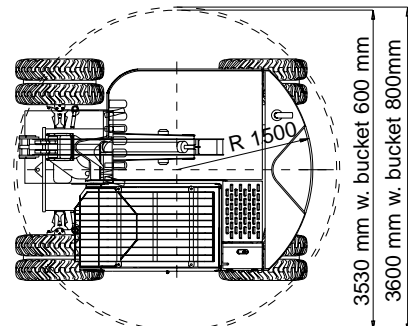
### HML 32 Slew circle



	MB	TPA	CB
Dimension A*	3045	2960	1665
180° sl. circle	4545	4460	3165
360° sl. circle	6090	5920	3330

Work equipment: MB = Monobloc boom, TPA = Two-piece articulated boom, CB = Circular boom

\* Boom fully articulated



# Carrying capacity

## Load radius from the center of the ring gear

Height of hook		3,0 m		4,0 m		5,0 m		6,0 m	
		180°	90°	180°	90°	180°	90°	180°	90°
3,0 m	Supported	–	–	2,39	1,99	1,67	1,44	1,54	1,00
	Traveling	–	–	1,83	1,90	1,31	1,35	0,87	0,94
1,5 m	Abgestützt	3,74	2,85	2,23	1,89	1,91	1,35	1,91	0,97
	Traveling	2,59	2,72	1,67	1,79	1,17	1,26	0,84	0,90
0 m	Abgestützt	4,34	2,80	2,61	1,73	1,98	1,26	1,59	0,95
	Traveling	2,37	2,60	1,54	1,64	1,10	1,19	0,80	0,87
– 1,0 m	Abgestützt	4,54	2,63	2,81	1,71	2,14	1,22	1,42	0,90
	Traveling	2,30	2,49	1,47	1,59	1,06	1,14	0,78	0,85

Height of hook		3,0 m		4,0 m		5,0 m		6,0 m	
		180°	90°	180°	90°	180°	90°	180°	90°
3,0 m	Supported	5,50	3,20	3,20	1,90	2,30	1,40	1,90	0,90
	Traveling	2,90	3,10	1,60	1,80	1,20	1,30	0,80	0,90
1,5 m	Supported	5,10	2,90	3,80	1,80	2,60	1,30	1,90	0,90
	Traveling	2,60	2,70	1,70	1,80	1,10	1,20	0,70	0,90
0 m	Supported	5,80	2,40	2,90	1,70	2,50	1,20	2,00	0,80
	Traveling	2,10	2,30	1,50	1,60	0,90	1,10	0,70	0,80
– 1,0 m	Supported	5,60	2,30	2,90	1,50	2,00	1,10	1,60	0,80
	Traveling	2,00	2,20	1,30	1,50	1,00	1,10	0,70	0,80

All values in tons (t) were determined acc. to ISO 10567 and include a stability factor of 1.33 or 87% of the hydraulic lifting capacity. In each case, the smaller value is indicated. In the event of an attached bucket the bucket weight must be deducted from the permissible payload. When used for crane operations, excavators must be equipped with hose-rupture safety valves and overload warning device acc. to EN 474-5.

Work equipment: MB = Monobloc boom, TPA = Two-piece articulated boom, CB = Circular boom, twin tires 8.25-20

## HML 32 - Swing bucket for slope & profiling operations



## HML 32 - Excellent digging depth with excavating bucket



# Additional equipment

## Tires

500/45-20 (wide-base tires)  
365/70 R 18 MPT (total width = 2290 mm)  
Alternative tires on request

## Optional booms

Monobloc boom / dipperstick 2000 mm  
Monobl. boom, dipperstick 2000 mm / offset boom 850 mm  
Two-piece articulated boom, dipperstick 2000 mm  
Circular boom, dipperstick 1650 mm

## Outriggers

Outrigger pads, flat or rubber-lined  
Rear support blade, 2290 mm or 2460 mm wide  
Front dozer blade, 2460 mm wide

## Operator's stand

Air-cushioned driver's seat with longitudinal-horizontal suspension, seat and seatback heating  
Independent diesel heating with timer  
Air conditioning

## Buckets (quick-mounting)

Bucket, tapered	290 mm / 95 l
Bucket, with ejector	290 mm / 65 l
Bucket, tapered	350 mm / 115 l
Bucket, with ejector	350 mm / 85 l
Bucket, tapered	450 mm / 160 l
Bucket, with ejector	450 mm / 115 l
Bucket	600 mm / 240 l
Bucket	800 mm / 335 l*
Bucket	900 mm / 385 l*
Cable-laying bucket	220 mm
Ditch-cleaning bucket	1500 mm / 270 l
Swing bucket, 2 x 40 deg.	1500 mm / 345 l*

## Clamshell grabs

GM 2325	325 mm / 135 l
GM 2400	400 mm / 170 l
GM 2500	500 mm / 220 l*
GM 2600	600 mm / 260 l*

Grab transport lock (serrated pipe)

## Attachments

Fork carrier, 1240 mm wide  
Forks, 1120 mm long  
Load hook attachable to bucket rod  
Ripper tooth  
Crane hook

## Hydraulic hammer

Type M 140 SMS, sound-insulated.  
Tools: Moil point and chisel

## Hydraulic transverse cutting unit

Type WS 30, 30 kW, operating weight 375 kg

## Further options

Steering change-over system for blade operation  
Bucket control change-over when fork carrier is mounted  
Open return for hydraulic hammer operation  
Quick-change adapter for hydraulic hammer operation  
Hose-rupture safety valves for intermediate boom / dipperstick  
Filling with biodegradable hydraulic oil, ester-based, VI 68  
Electrical tank refilling pump  
Anti-theft device (immobilizer)  
Set of lighting for cab (working floodlights front & rear)  
Additional tool box  
Boom height limitation

\* Not permitted for every type of boom. Please inquire

Further accessories and attachments on request  
Subject to change without further notice







# HML 32 Mobile Excavator

Power and state-of-  
the-art engineering

Operating weight 8-9 t  
Engine power 53 kW (72 HP)  
Bucket capacities 65-385 l



HML 32 – The machine illustrated may include non-standard equipment.